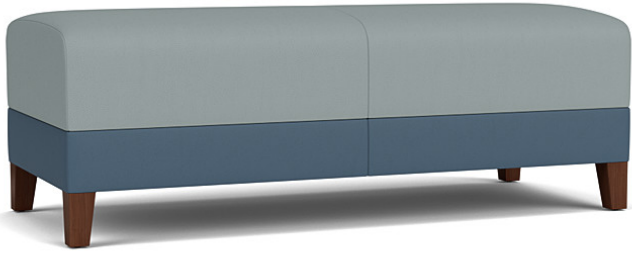


Fremont 2 Seat Bench

Starting at \$1410 | Item Number FT2001



Sleek Contemporary Design

- Designed for lounge, reception, waiting room and educational applications
- Lowel panel is upholstered separately for creative color combinations
- Practical 4" tall legs for for easy cleaning beneath
- Heavy-duty construction
- Matrex seat support system for long-life seating comfort
- Environmentally friendly soy-based foam & water-based adhesives
- Limited lifetime warranty on structure; 2+ years on upholstery
- Made proudly in the USA in a facility powered by 3,200 solar panels

Available Options

| | |
|---------------------------|-------|
| Power Unit with USB A & C | \$222 |
| Ganging Brackets | \$75 |

DIMENSIONS

| | |
|--------------------------|------------|
| Seat Width | 48 |
| Seat Height | 17.5 |
| Overall Dimensions WxDxH | 48x21x17.5 |
| Seat Thickness | 6 |
| Foot Height | 4 |

MATERIALS

| | |
|---------------------|-------|
| COM Yardage | 2.5 |
| Foot Glide Material | Nylon |

GENERAL

| | |
|---------------------|------------------|
| Weight Capacity lbs | 600 |
| Product Weight lbs | 34 |
| Assembly Required | No |
| GSA SIN Number | 33721 |
| Country of Origin | US |
| Harmonized Code | 9401.61.6031 |
| Warranty | Limited Lifetime |

PACKAGING

| | |
|-----------------------|------|
| Carton Quantity | 1 |
| Ships FedEx | Yes |
| Shipping Weight lbs | 41 |
| Shipping Volume cu ft | 17.2 |

COMPLIANCE

| | |
|-------------------|-----|
| CAL TB 117-2013 | Yes |
| CARB Phase II | Yes |
| TSCA Title VI | Yes |
| California Prop65 | Yes |