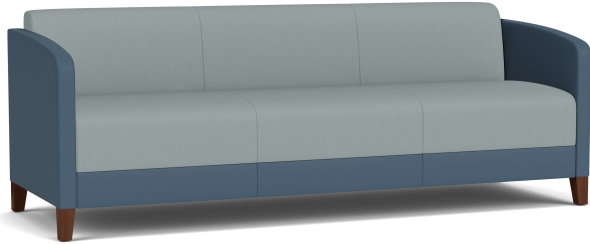


Fremont Sofa

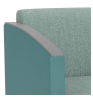


Starting at \$3645 | Item Number FT1601



Sleek Contemporary Design

- Designed for lounge, reception, waiting room and educational applications
- Fully-upholstered seat, back and arm panels
- Lowel panel is upholstered separately for creative color combinations
- Practical 4" tall legs for for easy cleaning beneath
- Heavy-duty construction
- Matrex seat support system for long-life seating comfort
- Environmentally friendly soy-based foam & water-based adhesives
- Limited lifetime warranty on structure; 2+ years on upholstery
- Made proudly in the USA in a facility powered by 3,200 solar panels

Available Options

	Solid Surface Armcaps	\$240
	Chair Power with USB A & C	\$222
	Swivel Tablet	\$467

DIMENSIONS

Seat Width	72
Seat Height	17.5
Arm Height	26
Overall Dimensions WxDxH	77.5x27x29
Inside Dimensions WxDxH	72x19.5x12
Seat Thickness	6
Swivel Tablet Dims LxWxT	16x10.5x1
Arm Width	3
Foot Height	4

MATERIALS

COM Yardage	8.75
Foot Glide Material	Nylon

GENERAL

Weight Capacity lbs	700
Product Weight lbs	148
Assembly Required	Yes
GSA SIN Number	33721
Country of Origin	US
Harmonized Code	9401.61.6031
Warranty	Limited Lifetime

PACKAGING

Carton Quantity	2
Ships FedEx	No
Shipping Weight lbs	161
Shipping Volume cu ft	30.4

COMPLIANCE

CAL TB 117-2013	Yes
CARB Phase II	Yes
TSCA Title VI	Yes
California Prop65	Yes