



Seating the Way You Want It
Since 1973

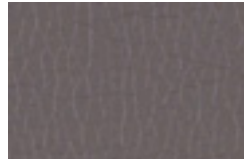
PATTERNS	GRADE
Beeline EPU	6
Canter EPU	5
Chime CV	8
Groove EPU	8
Lasanna CV	8
Silica	8
Silica Leather	9
Silica Stride	10
Silica Tech	9
Tribeca CV	7
Vanguard CV	7



CANTER EPU
QUARRY



TRIBECA CV
MICA



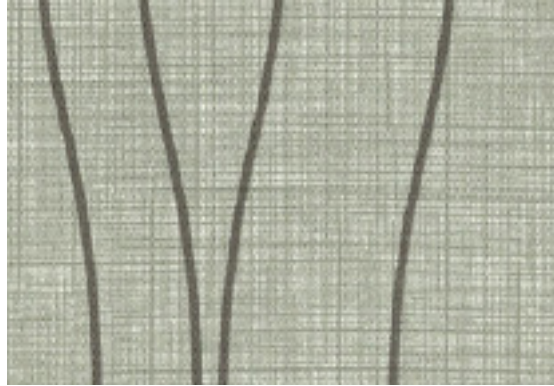
CANTER EPU
STORM



SILICA STRIDE
MARBLE



TRIBECA CV
CLOUD



LASANNA CV
ALOE



GROOVE EPU
SURPLUS



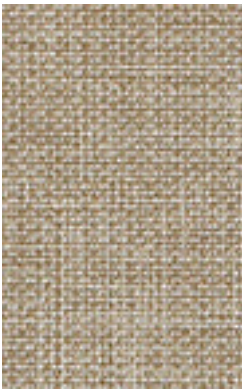
SILICA STRIDE
ECRU



TRIBECA CV
GRIFFIN



BEELINE EPU
OAT



VANGUARD CV
LUNETTE



GROOVE EPU
CALM



SILICA LEATHER
PEWTER



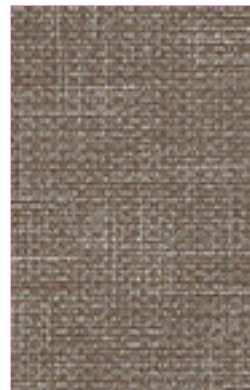
SILICA BREAKWATER



SILICA TECH
FOG



CHIME CV
MINERAL



VANGUARD CV
PEBBLE



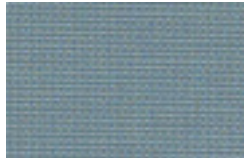
BEELINE EPU
NIMBUS



LASANNA CV
PUMICE



SILICA LEATHER
CHAMBRAY



SILICA TECH
CALM



SILICA REGATTA



SILICA STRIDE
TIDAL



TRIBECA CV
MARINER



CHIME CV
REEF



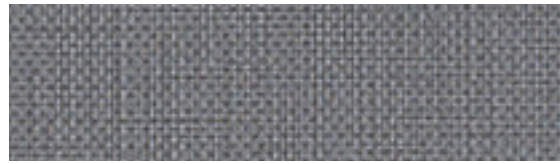
SILICA LEATHER
INK



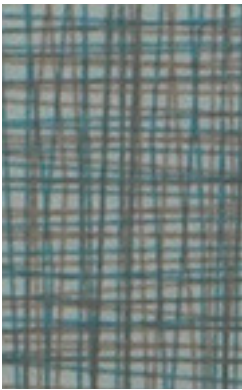
VANGUARD CV
FOIL



CANTER EPU
IRON



BEELINE EPU
JETTY



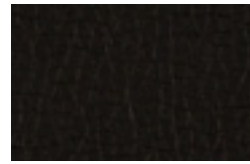
SILICA STRIDE
PLACID



GROOVE EPU
HARBOR



SILICA LEATHER
ECLIPSE



CANTER EPU
ONYX



CANTER EPU
INK



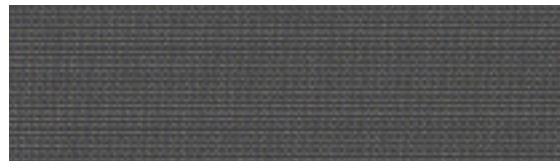
LASANNA CV
CASCADE



VANGUARD CV
POLARIS



CHIME CV
PACIFIC



SILICA TECH
KOHL



These fabrics meet or exceed these ACT performance guidelines.

Pattern	Fiber Content & Backing	Finish	Approx. Repeats	Abrasion (D.R.)	Flammability*	Cleaning Codes
BEELINE EPU	100% EPU Polyurethane, Polyester Backing	(none)	(none)	900,000	CAL TB 117-2013 NFPA 260 UFAC Class I	W Bleach Cleanable (4:1)
COVER CLOTH	56% Repreve® Post Consumer Recycled Polyester, 44% Polyester	Crypton® Green	(none)	200,000	CAL TB 117-2013 NFPA 260 UFAC Class I	W Bleach Cleanable (10:1)
CHIME CV	100% Clean Vinyl/Phthalate Free	Protective Topcoat	6.5" L x 6" W	250,000	CAL TB 117-2013 NFPA 260 UFAC Class I	WS Bleach Cleanable (10:1)
GROOVE EPU	100% EPU Polyurethane, Polyester Backing	(none)	22.44" L x 14.875" W	900,000	CAL TB 117-2013 NFPA 260 UFAC Class I	W Bleach Cleanable (4:1)
LASANNA CV	100% Clean Vinyl/Phthalate Free	Protective Topcoat	(none)	200,000	CAL TB 117-2013 NFPA 260 UFAC Class I	WS Bleach Cleanable (10:1)
SILICA	100% Silicone, Polyester Backing	(none)	(none)	365,000	CAL TB 117-2013 NFPA 260 UFAC Class I	WS Bleach Cleanable (4:1)
SILICA LEATHER	100% Silicone, Polyester Backing	(none)	(none)	210,000	CAL TB 117-2013 NFPA 260 UFAC Class I	WS Bleach Cleanable (4:1)
SILICA STRIDE	100% Silicone, Polyester Backing	(none)	24.75" L x 24.75" W	500,000	CAL TB 117-2013 NFPA 260 UFAC Class I	WS Bleach Cleanable (4:1)
SILICA TRIAD	100% Silicone, Polyester Backing	(none)	0.125" L x 0.25" W	200,000	CAL TB 117-2013 NFPA 260 UFAC Class I	WS Bleach Cleanable (4:1)
TRIBECA CV	100% Clean Vinyl/Phthalate Free	Protective Topcoat	(none)	100,000	CAL TB 117-2013 NFPA 260 UFAC Class I	W Bleach Cleanable (10:1)
VANGUARD CV	100% Clean Vinyl/Phthalate Free	Protective Topcoat	(none)	100,000	CAL TB 117-2013 NFPA 260 UFAC Class I	W Bleach Cleanable (10:1)

* This term and any corresponding data refer to typical performance in the tests indicated and should not be construed to imply the behavior of this or any other material under actual fire conditions.

Cleaning Code Definitions:

W: Water-based cleaning agents or foam may be used.

WS: Clean with water-based cleaning agents, foam or pure, water-free solvents. Vacuuming or light brushing is recommended to prevent dust and soil build up.

For memo samples, please contact:



Seating the Way You Want It
Since 1973

www.lesro.com | 800.275.7545