



Seating the Way You Want It

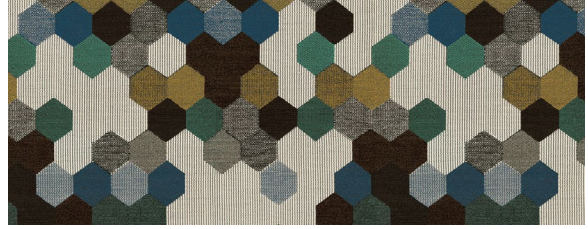
Bijoux	Gr. 10
Colorado	Gr. 9
Helix Print	Gr. 10
Hide	Gr. 9
Maxwell Print	Gr. 10
Perspective	Gr. 10
Savile	Gr. 9
Scholar	Gr. 9
Siltech Grain	Gr. 9
Siltech Press	Gr. 9
Tartan Print	Gr. 10
Tilt	Gr. 10

Carnegie



Maxwell Print 6380

110



Maxwell Print 6380

113



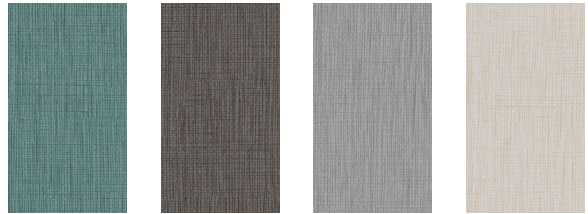
Maxwell Print 6380

111



Savile 6458

41



6458 51

6458 39

6458 38

6458 31



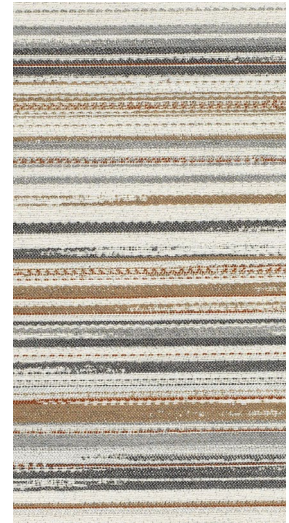
Perspective 6246

6



6246

8



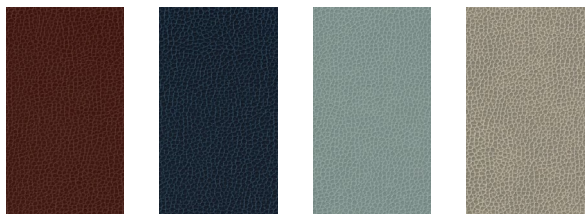
6246

1



Siltech Grain 6300

13



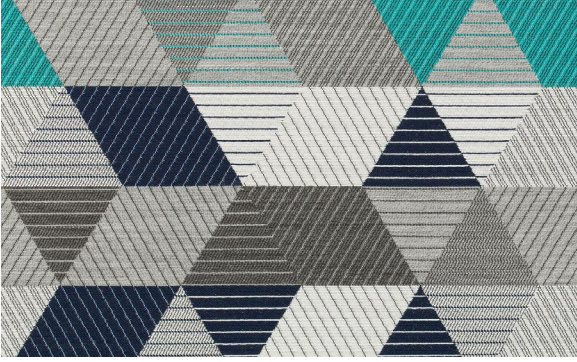
6300 14

6300 8

6300 9

6300 3

Carnegie



Tilt 6192

10



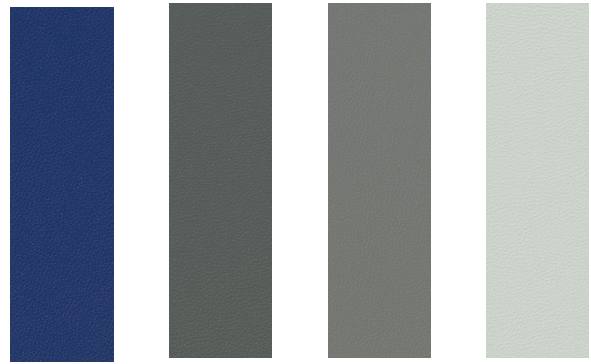
Tilt 6192

11



Siltech Press 6298

176

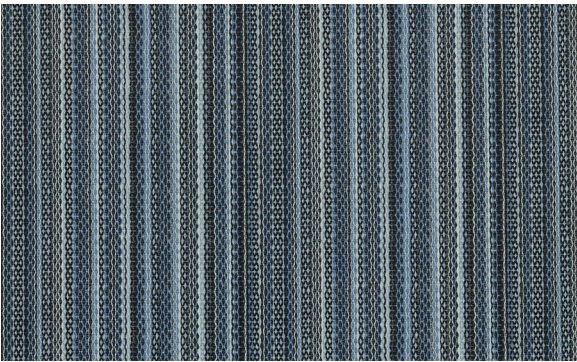


6298 174

6298 128

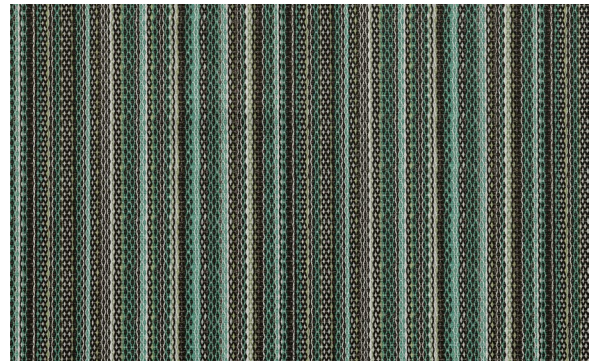
6298 129

6298 165



Helix Print 6272

3



Helix Print 6272

4



Scholar 6002

16



6002 6

6002 4

6002 2

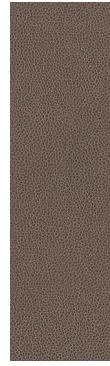
6002 1

Carnegie



Hide 6514

14



6514 13



6514 12



6514 11

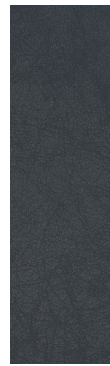


6514 20



Colorado 6884

4



6884 8



6884 7



6884 3



6884 1



Bijoux 6868

2



Bijoux 6868

12



Tartan Print 6016

102



Tartan Print 6016

101

Carnegie

Pattern**	Width	Content	Abrasion	Repeat	Cleaning Code*
Bijoux	55"	100% FR Polyester	100,000 DR	N/A	WS
Colorado	54"	Face: 100% Clean Performance Urethane	200,000 DR	N/A	WS & BC
Helix Print	54"	Face: 71% Polyurethane (Polycarbonate), 29% Silicone	250,000 DR	9" W	WS & BC
Hide	54"	Face: 100% Polyurethane (Polycarbonate)	250,000 DR	N/A	DE, WS & BC
Maxwell Print	54"	Face: 71% Polyurethane (Polycarbonate), 29% Silicone	250,000 DR	10" L x 13.5" W	WS & BC
Perspective	54"	67% Sunbrella® Acrylic, 33% Sunbrella® Polyester	100,000 DR	24.5" L	WS & BC
Savile	54"	Face: 100% Polyurethane (Polycarbonate)	250,000 DR	N/A	DE, WS & BC
Scholar	54"	Face: 95% Polyurethane (Polycarbonate), 5% Silicone	300,000 DR	N/A	DE, WS & BC
Siltech Grain	55"	Face: 100% Silicone, Back: 100% Polyester Double Knit	200,000 DR	N/A	WS & BC
Siltech Press	55"	Face: 100% Silicone	200,000 DR	N/A	WS & BC
Tartan Print	54"	Face: 71% Polyurethane (Polycarbonate), 29% Silicone	250,000 DR	5.75" L x 5" W	WS & BC
Tilt	54"	67% Sunbrella® Solution Dyed Acrylic, 33% Sunbrella® Solution Dyed Polyester	100,000 DR	12.5" L x 9.5" W	WS & BC

FLAME RETARDANCY:

California Technical Bulletin 117-2013

IMO 2010 FTP Part 8 for Upholstery as Stocked (Hide, Savile, and Scholar do not pass)

ECO INFO:

California Proposition 65

LEED Compliant

Free of PFAS, PVC, Ozone-depleting chemicals, Solvents

No topical finishes

Hydrolysis: ISO 1419 (Tropical Test Method C)

7 weeks - Hide, Perspective, Savile

15 weeks - Colorado, Helix Print, Maxwell Print, Scholar, Siltech Grain, Siltech Press, Tartan Print

200 hours lightfastness

1,000 hours lightfastness - Siltech Grain, Siltech Press

*Cleaning Codes:

WS & BC - Water / Solvent & Bleach Cleanable

DE - Dry Erase, WS & BC - Water/Solvent & Bleach Cleanable

WS - Water / Solvent

**Please visit www.carnegiefabrics.com

to view the full color line and request samples.

